

SAILING INSTRUCTIONS



ROYAL VICTORIA YACHT CLUB



UPDATED: NOVEMBER 1, 2011



1. Rules

Racing will be governed by the rules as defined in the current Racing Rules of Sailing, the prescriptions of the CYA and these sailing instructions.

One Design Class rules will apply when boats are racing as a One Design Class.

The rules of PHRF-NW will apply when boats are racing as a PHRF fleet. In addition the following will apply: A right of way boat shall not hinder a give way boat by having her retractable bowsprit extended unless i) she is flying a spinnaker, or ii) she has just dropped her spinnaker or iii) the bow of the boat has just passed a weather mark.

2. Race Committee

The Race Committee shall consist of the Sailing Committee of the Club plus any other persons delegated by the Sailing Committee for duties connected with a race.

3. Registration

- a) All skippers must register yachts for the Racing Program, either online (see overleaf) or using the forms that are available at the Office, and pay the current racing fees.
- b) Yachts racing in PHRF classes must be paid-up members of PHRF-NW. Yachts racing One-Design must conform to their class rules and will race together as a fleet.
- c) **Race Officer Duties for RVYC members Only:**

All registered skippers must sign up for and complete a minimum of **two (2)** race committee dates. Skippers registering for Winter or Summer only must sign up for **one (1)** race committee date. Keelboats please note that **only one (1) date may be a Frostbite date**. Indicate your choice of dates on the sign up sheet on the notice board at the club **and** on your registration form. A monthly listing of members who have not signed up for Race Committee duties will be posted on the notice board at the club. A Race Committee administration fee of **\$50 per missed date** will be assessed to RVYC members who fail to sign up for or complete their required duties. The Race Committee officer of the day is responsible for ensuring that he/she has enough personnel to assist him/her with the running of the races. If you miss a race(s) because of your Race Officer duties you will be awarded an average of your scores for that series. For a boat to receive average points in a series, the Skipper (registrant) shall perform their Race Committee duties on the date they have indicated.

The "Assistant Race Officer" position should be reserved for:

 - Juniors
 - Individual Dinghy skippers
 - Inexperienced members who have not done much race committee.
 - Non-members

Any changes to the Race Committee schedule **must be approved** by the Sailing Program Supervisor or the Fleet Captain.
- d) **Race Committee Duties for Non-Members Only:**

Because of insurance restrictions on the use of RVYC Club boats, non-members must sign up to assist a RVYC Race Officer. Non-members, please sign up accordingly with a skipper of your choice.
- e) **Other Registration policies**
 1. Any yacht not pre-registered will not be scored.
 2. The annual registration covers the period of October 1 to September 30.
 3. Registration may be by paper form or online through the RVYC website – www.rvyc.bc.ca

4. Divisions-Round-the-Buoys Races

Div 1 Keelboat PHRF (0–162)

Div 2 Keelboat PHRF (163–192)

Div 3 One Design Int. Star

Div 4 Keelboat PHRF (193-320)

Div 5 One Design Cal 20

Div 6 One Design J80

For the Fall/Winter Series only, Div 2 and Div 4 will combine into Div 2 Keelboat PHRF (163-320), and Division 1 and Division 6 may combine upon agreement of the participants.

Signal	Flag and Sound	Minutes before starting signal
Warning	Class Flag; 1 sound	5
Preparatory	P,I,Z,Z, with I, or black flag; 1 sound	4
One-minute	Preparatory flag removed; 1 long sound	1
Starting	Class Flag removed; 1 sound	0

The warning signal for each succeeding class shall be made with or after the starting signal of the preceding class.

5. Divisions - Long Distance, Wednesday Night Distance Series and Trophy Races

Division 1 (PHRF 0-160) Division 2 (PHRF 161 and up)
(unless modified by Trophy Race notice of race or sailing instructions)

6. Safety Categories

Safety of the yacht and crew is the sole responsibility of the owner / skipper. Yachts in Long Distance races and winter Round-the-Buoys shall meet 2010 PIYA category III requirements. Yachts racing summer Round-The-Buoys shall meet 2010 PIYA Category IV. One-Design yachts racing summer 'Round-The-Buoys shall meet Class safety rules. All yachts shall meet Transport Canada Safety Regulations. The Sailing Committee requires that, for keel boats racing Round-the-Buoy, sufficient fuel for one hour's engine operation be carried, but radar reflectors are not required. Yachts not complying may be protested for non-compliance.

7. Amendments to Sailing Instructions

Changes to these Sailing Instructions will be posted on the "Official Notice Board", which is located in the lower deck of the clubhouse and on the club website (www.rvyc.bc.ca) .

8. Starting Signals, RRS 26

Races shall be started by using the following signals. Times shall be taken from the visual signals: the absence of a sound signal shall be disregarded.

9. Starting Sequence

The starting sequence shall be defined by class flag as indicated below. The sequence may or may not be in the same order as listed below depending on conditions and circumstances.

a) Round-the Buoys (Wednesday Night)

Divisions	Class Flag
Distance Series	D
Div 1 Keelboats	1
J80	J80
Stars	Star
Div 2 Keelboats	2
Div 4 Keelboat	3
Cal 20	Cal 20

b) Round-the Buoys (Fall/Winter)

Divisions	Class Flag
Div 1 Keelboat and J80	1
Stars	Star
Div 2 Keelboat	2
Cal 20	Cal 20

c) Frostbite Races – Dinghies

Appropriate class flags for each class present at the starting area – ie: Laser; Laser Radial, 420, 470, etc.

d) Races will be abandoned by the Race Committee:

1. When less than three boats in a class actually start.
2. When no yacht finishes within the time limit.

Races that are not re-sailed after abandonment are cancelled.

10. Starting Times

- a) The first warning signal for Saturday Frostbite and Mini 12's races is 13:00 hrs.
- b) For Sunday Long Distance and Trophy races the warning signal is at 10:00 hrs.
- c) For Sunday Round-the-Buoys races, first warning signal will be at 10:00 hrs.
- d) For Wednesday Night Distance Series and Round-the-Buoy races, the first warning signal shall be made at 1815 hrs.

11. Starting Line

- a) For Trophy and Round the Buoys Races the Start Line is defined as a line between a staff displaying an orange flag on a Race Committee Boat and a nearby mark;
- b) For Winter Distance Series Races the Start Line is defined as a line between a staff displaying an orange flag either on a Race Committee Boat or on the end of the RVYC floats and a nearby mark;
- c) A spacer mark may be set off the stern of the committee boat at the starting line. This mark is considered an extension of the Race Committee Boat. Boats shall not pass between this mark and the Race Committee Boat when approaching the line to start. Boats failing to comply shall be scored DNS;
- d) Yachts not starting must keep more than 50 metres from the Start line after the preparatory signal has been sounded to allow starting yachts room to maneuver. Infringing yachts may be protested.

12. Individual Recall

RRS 29.1

13. General Recall, RRS 29.2

a) Sunday Long Distance and ATB

When at the starting signal the race committee is unable to identify boats that are on the course side of the starting line or to which rule 30 applies, or there has been an error in the starting procedure, the race committee may signal a general recall (display the First Substitute with two sounds).

The warning signal for a new start for the recalled class shall be made one minute after the First Substitute is removed (one sound), and the starts for any succeeding classes shall follow the new start.

b) Wednesday Long Distance and ATB

When at the starting signal the race committee is unable to identify boats that are on the course side of the starting line or to which Rule 30 applies or there has been an error in the starting procedure the race committee may signal a general recall (display the first substitute with two sound signals). The warning signal for the recall division will be the starting signal for the last start of the race, subsequent recalled divisions will follow. This changes RRS 29.2

14. Course Signals

a) Round-the-Buoys (Mini 12's- see p 12)

Courses as indicated by diagrams on pages 10, & 11 will be indicated on the Committee Boat with placards. Different divisions may sail different courses. The objective of the Race committee is to give equal time on the course to all divisions. Courses will be identified by the letter of the course to be sailed. Marks left to port - P, marks left to starboard - S.

NOTE: In the absence of a P or S designation, the default rounding will be to leave the marks to port.

NOTE: On Bermudian (B) and Windward-Leeward (W, W2, W3) courses, after starting properly, yachts shall not sail through the Start/Finish line except to finish. A Yacht breaking this rule shall not correct her error. However, she will be exonerated by completing a Two-Turns Penalty, otherwise she shall be scored DSQ. This changes rule 28.1. The starting and finishing lines and the marks that form it are obstructions for boats subject to this rule and therefore rules 19 and 20 may apply between boats while they are approaching and passing it.

b) Long Distance, Wednesday Night Distance Series and Trophy Races

1. Courses for the Trophy Races will be indicated on the Committee Boat with Placards. Different divisions may sail different courses. Courses will be identified by letter and divisions racing them by numerals. For example, 1,2,F,3,4,A indicates Divisions 1 & 2 sail course F, and Divisions 3 & 4 sail course A, from the Course Atlas contained on page 14.
2. Courses for the Distance series will be decided at a skipper's meeting held at 0900 on the Club Foreshore on the day of the race.
3. For Wednesday Night Distance Series the course shall be indicated by placards displayed on the Race Committee Boat. These placards shall indicate class, marks to be rounded and the side which they are to be passed (for example 12ABS would indicate the divisions 1 & 2 are to round marks A & B to Starboard then finish). The race committee will display a finish line placard (X, Y, or Z) to indicate where to finish the race. Refer to the Sailing Instructions section Location of Marks Used in the Wednesday Night Distance Series for the description of these finish lines. There may be a race committee boat on station at the finish line but yachts are required to record their GPS finish time.

Finish times for Wednesday Night Distance shall be recorded on the clipboard located on the outside of the scorers office in the RVYC Clubhouse prior to 2100h on the day of the race. Times received by phone will be accepted.

c) Navigational Restrictions

While racing, yachts shall not sail:

1. Between Mouat Reef and the Victoria Golf Course.
2. Between Flower island and Ten Mile Point.
3. Between Brinn Rock and Discovery Island.

When used as a mark for the course, Fulford Reef buoy may be left to port or starboard in accordance with the course designation. This Modifies RRS 63.1

15. Shortened Course - Long Distance Races, Wednesday Night Distance

Please record mark-rounding-times of boats ahead and behind you at Marks, 2, 3, 4, 5, 10, 11,12, 12, 14 & 15 (page 13), so that, in the event of no yachts finishing, a shortened course can be declared, and winners determined. "Mark rounding" is when a yacht is perpendicular to the rhumbline from the last mark.

For Wednesday Night Distance races, please record your mark rounding times at each mark so that, in the event of no yachts finishing, a shortened course can be declared. Also, the race committee may shorten the course at any point it selects subject to notification of the fleet (please monitor VHF 9). Note: failure to hear a notification of shortened course on VHF 9 will not be grounds for redress.

16. Finishing Line

a) Round-the-Buoys Races

Between the Race Committee flag on a Committee Boat and an adjacent mark.

b) Long Distance, Wednesday Night Distance Series and Trophy Races

A designated finish line identified as X, Y, or Z, or a range formed by the red pole on the Dolphin at the end of the dock and the pole on the Clubhouse patio. The race committee may have a person on station to record finish times, however; all yachts are REQUIRED to record their own finish time. See item 23 regarding the official race time.

These times are turned into the Race Officer or the Scorer no later than two hours after finishing for the Winter Distance Series and by 2130 for the Wednesday Night Distance Series.

17. Retiring from Races

Both in the interests of safety, and as a matter of courtesy, all yachts retiring from a race shall inform the Race Committee as soon as possible in person, by phone, or by VHF Channel 9. Failure to do so may result in disqualification from future races. The RVYC phone is 250-592-2441.

18. Time Limits

Series	1st Yacht	Other Yachts in DIV
Mini-12's	45 Minutes	1 hour
Dinghies	90 minutes	90 minutes
Round-the Buoys		
Fall & Winter	2 hours	2 hrs or 30 minutes after the first boat in the division finishes, whichever is later
Wednesday Night	1 hr & 45 min	1 hr & 45 min or 30 minutes after the first boat in the division finishes, whichever is later
Wednesday Night Distance		
Long Distance Races	2 hrs & 30 min.	(see below)
Trophy Races	5 hours	6 hrs & 30 min.
	5 hours	6 hrs & 30 min.

Yachts not finishing within the time indicated will be recorded as DNF. For **Wednesday Night Distance races**, the time limit is 2 hrs & 30 mins. If one or more boats finishes within this time limit, boats not finished but having continued to race will be scored TLE (Time Limit Expired). Boats scored TLE will be scored as 2 points more than the number of boats finished in their division; however, the highest score for boats scored TLE will be one point less than the DNF score. This modifies rules 35 and A4.2

19. Penalties and Protests

19.1 Penalties

For Wednesday Night racing (Round the Buoys and Long Distance), rule 44.1 is changed for all classes so that the Two-Turns penalty is replaced by the One-Turn penalty.

19.2 Protests

Protests will be in accordance with the RRS 60. Protesting yachts shall inform the Race Committee of their intention to protest upon either finishing or withdrawing from that Race. Protests must be filed within 90 minutes of the docking of the committee boat. Pre-hearings and Protests will be heard on the Tuesday following the incident at 1930 at the RVYC Clubhouse. In cases of scheduling problems, the hearing shall be held as soon as practicable after the incident at a time to be determined by the protest coordinator. The Race Committee shall inform the Protest Coordinator of any protests.

20. Series Scoring

Low point scoring system as per RRS A4. RRS A4.2 is modified as per RRS A9 (When a Series is Not a Regatta).

*PHRF will be scored using the Time on Time system. When conditions permit, there will be three races sailed per day of racing. All races sailed shall count towards the series score. The warning for the third race, when attempted, shall not sound after 14:30.

The scorer shall be advised of any errors or omissions in the published results in writing no later than two weeks after the end of the a series or race for that error or omissions to be acted on.

21. Throw-outs

If there are 10 or more races in a series, there shall be 3 throw-outs. If there are 7, 8 or 9 races in a series, there shall be 2 throw-outs. If there are 5 or 6 races in a series, there shall be 1 throw-out. If there are 4 or less races in a series, there shall not be any throw-outs.

22. Reporting - Long Distance, Wednesday Night Distance Series and Trophy Races

Before their warning signal all yachts intending to start shall hail their sail numbers to the Race Committee.

23. Official Race Time

The official race time clock will be set to agree with G.P.S. time - ie: G.M.T. plus appropriate time zone corrections. Yachts may use their onboard G.P.S. to record mark rounding and finish times. Yachts not using onboard G.P.S. may synchronize to the race committee time prior to starting. No redress will be available to yachts not using G.P.S.

24. Averaging

If a skipper (a) assists in running a race, or (b) misses a race because of (1) attendance at a racing-related meeting; or (2) attendance at a major race or regatta at the same time as the race; then his placement for that race in the series will be the average of his points for all the other races in that series, after throw-outs, round to the nearest whole number (e.g. 4.5=5). To apply, skippers must inform Race Committee in advance of the race. Note that only **one race date per series** may be averaged – ie: one Wednesday night race per series or all races sailed for that day of one Sunday RTB race day per series.

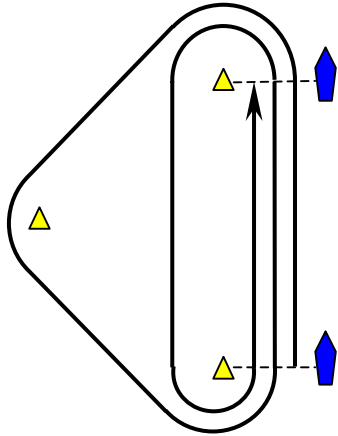
25. Prizes

Prizes will be awarded to the 1st, 2nd, and 3rd boats in a series.

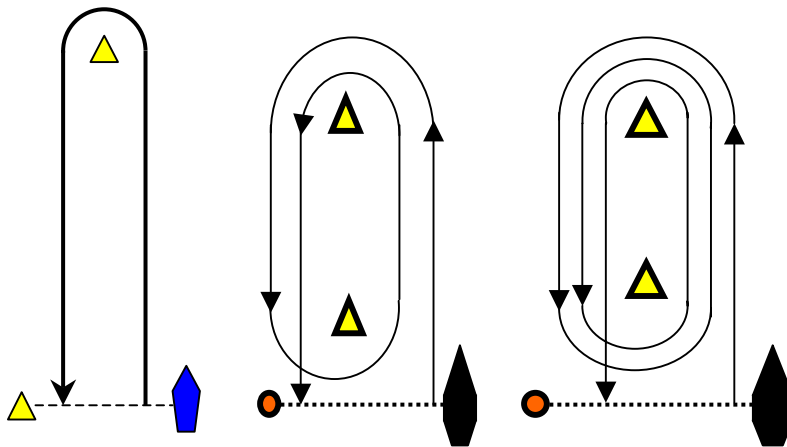
26. Course Descriptions: 'Round-the-Buoys' Races

a) Fall, Winter & Wednesday Nights

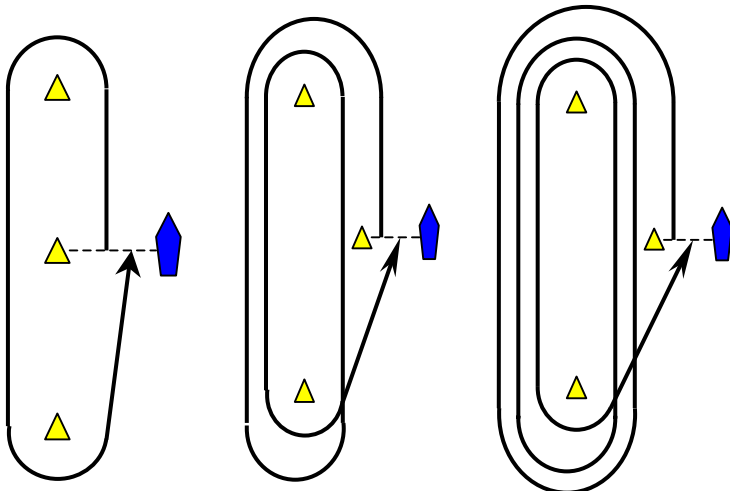
Course O- Olympic Course (Port-Rounding Shown)



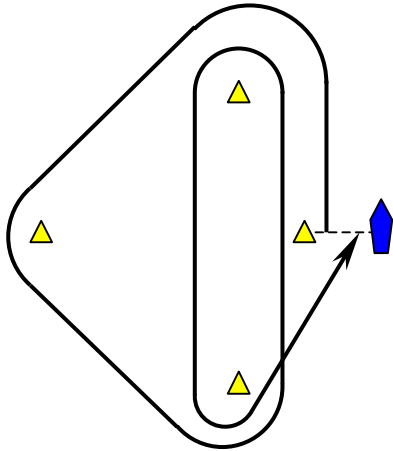
Course M- Windward-Leeward Course (Port-Rounding shown)



Course W- Windward-Leeward Course (Port-Rounding Shown)



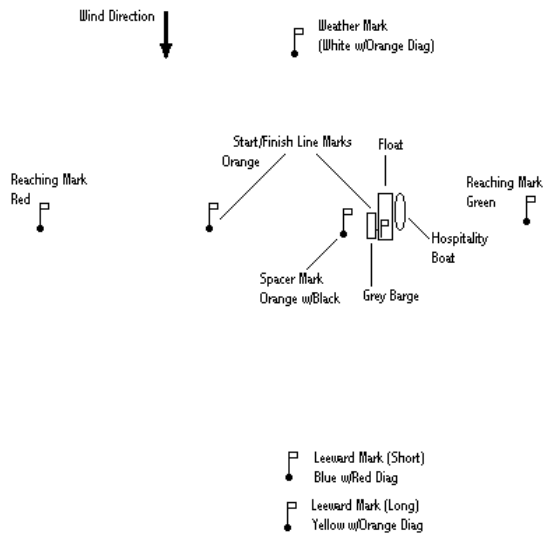
Course B- Bermudian Course (Port-Rounding Shown)



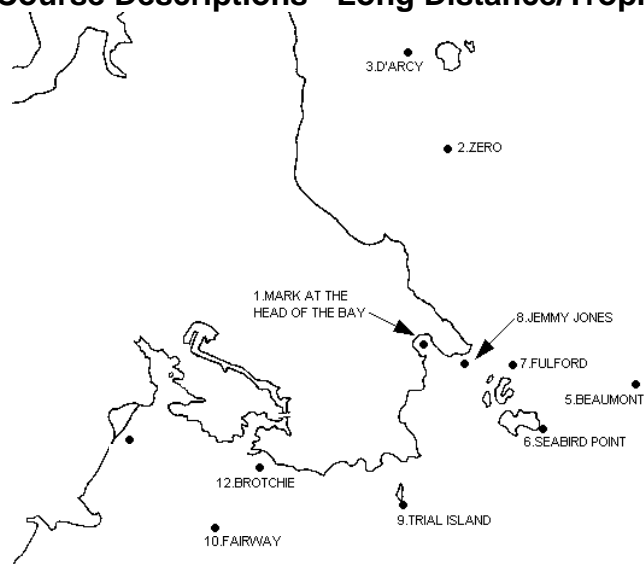
Mini-12's

The marks of the course will be coloured flags, and letters on the Committee Boat will indicate the order in which marks of the course are to be rounded according to the following:

- W- White flag
- R- Red flag
- B- Blue flag
- G- Green flag
- Y- Yellow flag
- P- Marks to port
- S- Marks to starboard
- 2- Twice around



b) Course Descriptions - Long Distance/Trophy Races



See Navigational Restrictions on Page 7

Location of Marks used in Long Distance Races

Mark	Description
1	Mark at head of Cadboro Bay
2	Zero Rock
3	D'Arcy Shoals Buoy
4	no longer designated
5	Beaumont Shoals Buoy
6	Seabird Point, Discovery Island
7	Fulford Reef Buoy
8	Jemmy Jones Island
9	Trial Island
10	Fairway's Check Buoy
11	Navy Mooring Buoy, located at 48° 25.363 N, 123° 27.182 W, bearing 210 degrees M .55 nm from Fisgard Light Buoy (V17)
12	Brotchie Ledge Light
13	Salmon Bank Buoy 48° 25.6'N 122° 58.5'W
14	U.S. Navy Buoy 48° 14.3'N 123° 21.8'W
15	Mark in Pedder Bay

Location of Marks used in Weds. Night Distance Series

Mark	Description
A	Johnstone Reef Can
B	Fulford Reef Buoy
C	Beaumont Shoal Buoy
D	Seabird Point (Discovery Island)
E	Great Chain Island
F	Trial Island
G	Enterprise Channel Buoy
H	Lee Rock Can
L	The ATB Leeward Mark

Finish Marks

- X The ATB finish line, after rounding or passing Mark L on its required side – eg: if the ATB finish line is to windward of L, yachts shall round L prior to finishing; if the ATB finish line is to leeward of L, yachts shall leave L to the required side prior to or while finishing (ie: finish through the line from the direction of L). If there is no L present, yachts shall finish through the line from the direction of the last mark.

- Y A range line from the lamp standard located on the north side of the north launching ramp at Cattle Point and the Cattle Point Day Marker. This range shall extend 150 metres from the Cattle Point Day Marker.
- Z Between a staff displaying an orange flag on a race committee boat and the Cattle Point day marker.

Long Distance and Trophy Course Atlas

Placard	Mark Sequence and Rounding	Length	Wind from
A	1, 2 to Starboard	12.3	North
B	1, 10 to Port	15.1	North
C	1, 2, 5 to Starboard	17.45	North
D	1 (S), 3 (S)	18.4	North
E	Not used		
F	1(S), 5(P), 3(P)	22.8	North
G	1(S), 6(P), 5(P), 2(P)	19.5	North
H	1(S), 3(S), 5(S)	23.3	North
I	1 (S), 6(P), 2(S), 5(S)	22.6	North
J	1(S), 5(P), 2(P)	17.5	North
K	1, 10, 12 to Starboard	16.4	North
L	7, 6, 9 to Starboard	12.1	Southeast
M	10, 11 to Starboard	21.68	Southwest
N	7, 6, 10 to Starboard	18.4	Southwest
O	7, 6, 10, 12 to Starboard	19.6	Southwest
P	10, 5 to Port	22.5	Southwest
Q	2, 5 to Starboard	17.0	Southeast
R	8(P), 2(S), 5(S)	17.2	Southeast
S	6, 5, 2 to Port	19.5	Southeast
T	3, 5 to Starboard	23.4	Southeast
U	8(P), 3(S), 5(S)	23.6	Southeast
V	6(P), 2(S), 5(S)	22.6	Southeast
W	6, 5, 3 to Port	25.0	Southeast
X	6(P), 3(S), 5(S)	28.2	Southeast
Y	5, 2 to Port	17.5	East
Z	9, 5 to Port	14.8	East
AB	9, 6 to Port	11.9	East
AC	5, 9 to Starboard	14.8	East

*NOTE: Mark #1 is assumed to be ½ mile from the Start Line

ROYAL VICTORIA YACHT CLUB RACING PROGRAM

For a complete race schedule, please see www.rvyc.bc.ca

The Royal Victoria Yacht Club runs an active year-round series of races and regattas for both dinghies and keelboats.

Weekly Club Racing Series

Fall/Winter/Spring (October—March)

Keelboat Around-the-buoys	Alternating Sundays
Keelboat Distance Racing	Alternating Sundays
Mini 12	Saturdays
Dinghy Frostbite Series	Saturdays

Summer (April—September)

Wednesday Night Racing	Wednesdays
Friday Night Fun Races	Fridays in mid-Summer <i>i.e.</i> Jack & Jill, Single-Handed
Generations Regatta	
Women in Wind series	

RVYC sailors also participate in shared race series with two local clubs:

1. Turkey Head / RVYC "Cross Bay Challenge" Distance Series January-March
2. Cadboro Bay Sailing Association Dinghy Racing - Summer Tuesdays

See: Turkey Head Sailing Association: www.thsa.bc.ca
Cadboro Bay Sailing Association: www.caddybay.ca

Major RVYC Annual Open Races & Regattas

Keelboats:

March	Winter One Design Regatta
April	THRASH Regatta (Spring "Opener")
April	Lipton Cup Trophy Race
May	Swiftsure Lightship Classic Race
October	Thermopylae Regatta (Fall "Closer")

Dinghies:

February	Frozen Assets Dinghy Regatta
May	Spring Dinghy Regatta
September	Fall Dinghy Championship

In addition, there are fleet championships for several one design fleets including Stars, J/80s, Martin 242, Mini 12s, Cal 20s, and T-Birds.

Trophy Races

Royal Victoria Yacht Club holds a number of trophies dedicated to particular distance races making up a Trophy Race series:

September	Thermopylae Cup
	Whitehouse Trophy
October	Virtue Cup
March	William Head Race
April	Lipton Cup

Popular Regional Events

RVYC racers are fortunate to be within a day's delivery sail of several great regional regattas:

Keelboats—Around the Buoys Regattas:

*(The closest local events are shown in **bold**)*

March	VARC Opener (Vancouver—RVYC)
April	VARC Spring (Vancouver—RVYC)
June	CFSA Regatta (Esquimalt—CFSA)
	VARC WAVES (Vancouver—RVYC)
July	Whidbey Race Week (Whidbey Island)
	RIPS Regatta- Plumper Sound
August	Cow Bay Regatta (Cowichan—CBSA)
September (Labour Day)	PITCH Regatta (Bellingham—BYC)
	Maple Bay Regatta (Maple Bay—MBYC)
September	SNYSC Regatta (Sidney—SNSYC)
October	VARC Closer (Vancouver—RVYC)

Keelboats—Distance:

March	Patos Island Race (Sidney—SNSYC)
March/April (Easter)	South Straits (Vancouver—WVYC)
May	Round Saltspring Race (Saltspring—SISC)
June (alternating years)	Van-Isle 360 (Nanaimo – NYC)

Dinghies:

April	Kitten Cup (Vancouver—RVYC)
May	Springtime (Kelowna—COSA)
June	WAVES Weekend (Vancouver—RVYC)
October	Pumpkin Bowl (Vancouver—WVYC)