



**LIPTON  
CUP  
2011**

# **SAILING INSTRUCTIONS**

APRIL 10, 2011  
Royal Victoria Yacht Club  
Victoria, BC

**1 RULES**

- 1.1** The regatta will be governed by the rules as defined in *The Racing Rules of Sailing*, the prescriptions of the Canadian Yachting Association, these Sailing Instructions and any amendments.

**2 NOTICES TO COMPETITORS**

Notices to competitors will be posted on the official notice board(s) located inside the Club's northeast entrance.

**3 CHANGES TO SAILING INSTRUCTIONS**

- 3.1** Any changes to the sailing instructions will be made on the water. The committee will display code flag L (black and yellow checks) indicating that boats shall come within hail to receive any changes.

**4 SIGNALS MADE ASHORE**

- 4.1** Signals made ashore will be displayed from the flagstaff adjacent to the RVYC Clubhouse.
- 4.2** When flag AP is displayed ashore, '1 minute' is replaced with 'not less than 90 minutes' in the race signal AP.

## **5 SCHEDULE OF RACES**

- 5.1** Date of racing: Sunday, April 10, 2011.
- 5.2** The scheduled time of the warning signal is 0955.
- 5.3** One race is scheduled for Sunday, with a target time of 3.5 hours. Failure to meet the target time will not be grounds for redress.

## **6 WARNING SIGNAL**

The warning signal will be Numeric Pennant 1

## **7 RACING AREAS**

- 7.1** The starting line will be in the vicinity of Ross Bay adjacent to Clover Point
- 7.2** The racing area will be off of the Victoria waterfront and may extend to parts of the Straits of Juan De Fuca. Competitors are strongly advised to check the appropriate charts for navigational hazards. **See Appendix 1**

## **8 THE COURSES**

- 8.1** **Appendix 2** shows the course marks that may be used.
- 8.2** The mark rounding sequence will be indicated on the Committee Boat.
- 8.3** The rounding sequence will be read from left to right. The letter "S" indicates starboard roundings, The letter P indicates Port rounding. Eg;  
Start, 3s, 6s, 4s, 2p, Finish, 13.9 nm
- 8.2** The course will be displayed from the race committee signal boat before or with the warning signal.
- 8.3** The course distances given in Appendix 2 are approximate and the actual distance may vary.

## **9 MARKS**

The starting and finishing marks will be the RVYC signal boat DI on one end of the line and a yellow inflatable buoy on the other.  
Marks 1 and 3 will be yellow inflatable buoys.

## **10 THE START**

- 10.1** Races will be started by using rule 26 with the warning signal made 5 minutes before the starting signal.
- 10.2** There will be one combined start for all divisions.
- 10.3** The starting line will be between a staff displaying an orange flag on the signal boat (DI) at the starboard end of the line and an anchored yellow buoy at the port end.
- 10.4** A boat starting later than 10 minutes after her starting signal will be scored Did Not Start without a hearing. This changes rule A4
- 10.5** You may submit your entry form to the Race Committee on the water prior to 09:30.
- 10.6** Boats intending to race must approach the committee boat prior to the warning signal and hail their sail number.

## **11 SHORTENING OF COURSE AFTER THE START/ABANDONMENT**

- 11.1** The race may be shortened at any mark of the course.
- 11.2** If half of the fleet is unable to complete at least two legs of the course at four hours elapsed time, the race will be abandoned and re-sailed at a later date.
- 11.3** The race may be abandoned for any reason affecting the safety or fairness of the competition. A race so abandoned will be re-sailed at a later date in the same calendar year.

## **12 THE FINISH**

- 12.1** The finish line will be between a staff displaying an orange flag on the signal boat (DI) at one end of the line and an anchored yellow buoy at the other end.

## **13 PENALTY SYSTEM**

For all divisions, rule 44.1 is changed so that the Two-Turns Penalty is replaced by the One-Turn Penalty.

## **14 TIME LIMITS**

- 14.1** The time limit of five (5) hours will apply or 1.5 hours after the first boat finishes, whichever is later.
- 14.2** Boats failing to finish within the time limit will be scored Did Not Finish. This changes rule 35 and A4.

## **15 PROTESTS AND REQUESTS FOR REDRESS**

- 15.1** Protest forms are available in the lower level of the RVYC Clubhouse. Protests shall be delivered to the General Office of RVYC within the protest time limit.
- 15.2** For each division, the protest time limit is 60 minutes after the race committee signal boat docks. The docking and protest time limits will be posted on the official notice board.
- 15.3** Notices will be posted within 30 minutes of the protest time limit to inform competitors of hearings in which they are parties or named as witnesses. Hearings will be held in the protest room, located downstairs at RVYC. Protests shall be heard in the order that they are received.
- 15.4** Notices of protests by the race committee or protest committee will be posted to inform boats under rule 61.1(b).

## **16 SCORING**

- 16.1** The Low Point scoring system of Appendix A will apply.
- 16.1** All yachts will be scored under the PHRF time on time method. There will be two divisions:
  - Division 1 – PHRF Rating up to 160
  - Division 2 – PHRF Rating 161 and over

## **17 SAFETY REGULATIONS**

- 17.1** A boat that retires from the race shall notify the race committee as soon as possible by VHF radio (Channel 9 will be used for race communications) in person, or by phoning RVYC at 592-2441.
- 17.2** Boats must comply with the safety requirements of PIYA Category III with the exceptions noted: *The PIYA requirements 3.8 (radar reflectors) and the 6W minimum for VHF radio in 3.14 are not mandatory for this race.*
- 17.3** For safety issues, the restrictions of SI 18 shall not apply.

## **18 RADIO COMMUNICATION**

A boat shall neither make radio transmissions while racing nor receive radio communications not available to all boats. This restriction also applies to mobile telephones. The Race Committee will be monitoring VHF Channel 09. Competitors are encouraged to monitor channel 09 during the last minute of the start sequence.

## **19 PRIZES**

- 19.1** Competitors are invited to the Royal Victoria Yacht Club for Social and Prize Giving immediately following the race, and conclusion of the protest time.
- 19.2** The overall winner will be awarded the Sir Thomas Lipton Perpetual Trophy, with prizes for the top three overall and in each division, plus draw prizes.

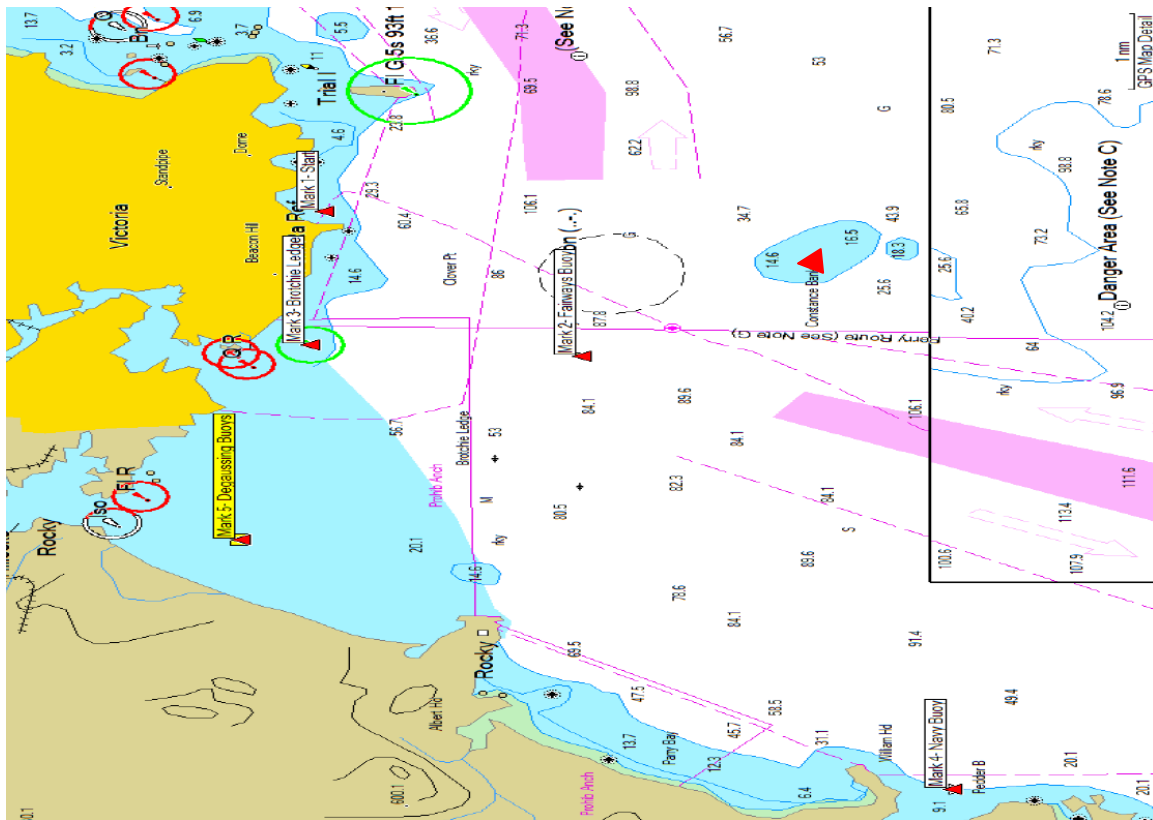
## **20 DISCLAIMER OF LIABILITY**

Competitors participate in the regatta entirely at their own risk. See rule 4, Decision to Race. The organizing authority will not accept any liability for material damage or personal injury or death sustained in conjunction with or prior to, during, or after the regatta.

## **21 INSURANCE**

Each participating boat shall be insured with valid third-party liability insurance with a minimum cover of \$1,000,000 (for Canadian boats) and \$350,000 (for US boats) per event or the equivalent.

# APPENDIX 1



# APPENDIX 2

The start line will be between a yellow inflatable mark in the vicinity of Ross Bay / Clover Point and the RVYC vessel Discovery Isle. This yellow inflatable mark may be used by the Race Committee as a mark of the course.

The rounding marks may include:

1. Start Buoy, a yellow inflatable mark = 0 nm
2. Fairways Buoy = 2.7 nm
3. A yellow inflatable mark in the approximate position of Constance Bank at approximately 48°21.1'N 123°21.59'W = 3.6 nm
4. Brochie Ledge = 1.5 nm
5. The Navy buoy in Pedder Bay at approximately 48 degrees 19.87' N, 123 degrees 32.22'W. = 8.8 nm
6. A 8ft Orange inflatable located in the vicinity of the Degaussing Buoys off the Esquimalt Lagoon beach at approximately 48° 24,75'N, 123° 27.37' W. = 4.6 nm

Additional approx distances between marks of the course:

Constance to Degaussing Buoy = 5.7 nm

Constance to Brochie = 3.9 nm

Constance to Pedder = 7.2 nm

Pedder to Brochie = 7.5 nm

Pedder to Degaussing Buoy = 5.7 nm

Fairway to Brochie = 1.9 nm

Fairway to Degaussing Buoy = 3.6 nm