



Royal Victoria Yacht Club

NOTICE of RACE

THE VIRTUE CUP TROPHY RACE

Royal Victoria Yacht Club

October 23rd, 2011

The start will be in the vicinity of Cadboro Bay

The race will be governed by the rules as defined in The Racing Rules of Sailing.

The race is an invitational race open to all Keelboats which comply with the following:

- PIYA category III (see www.ussailing.net/piya/) The PIYA requirement 3.8 governing radar reflectors and 3.14 requiring 6w minimum VHF is not mandatory for this race . Skippers are responsible for compliance with Canadian Coast Guard safe boating requirements.
- Current PHRF membership and rating
- Valid third party insurance with a minimum coverage of \$500,000CDN
- Advertising Category A

There is no entry fee.

The attached registration form must be completed and submitted to RVYC by 9:00AM on October 23rd, 2011. Or, if necessary, you may submit your entry form to the race committee on the water up to 9:45AM.

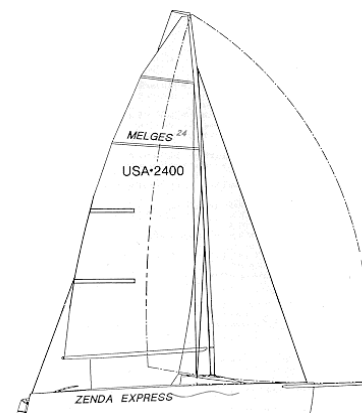
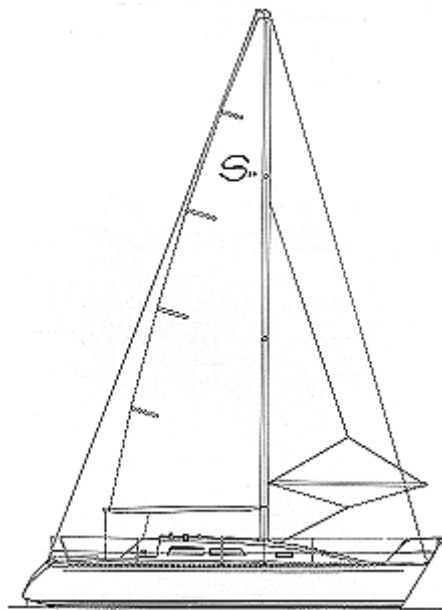
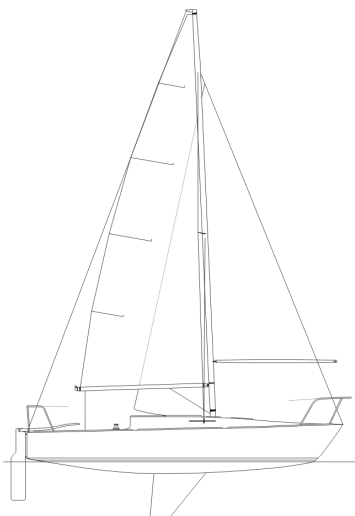
This requirement is waived for boats which are currently enrolled in the RVYC Racing Program.

In addition to submitting a registration form all boats intending to race must approach the committee boat prior to the warning signal and hail their sail number.

The scheduled time of the warning signal for the race is 9:55AM.

There will be two divisions:

- Division 1 – PHRF Rating up to 160
- Division 2 – PHRF Rating 161 and over





SAILING INSTRUCTIONS

The Virtue Cup Trophy Race

RULES

The race will be governed by the rules as defined in 2009-2012 Racing Rules of Sailing.

CHANGES to SAILING INSTRUCTIONS

Any changes to the sailing instructions will be made on the water. The committee will display code flag L (black and yellow checks) indicating that boats shall come within hail to receive any changes.

THE COURSE

Courses will be designated by a placard or placards displayed on one side of the Committee Boat. The course will be in accordance with the course atlas in the RVYC Sailing Instructions booklet. (Also see Addendum A)

The course may be shortened in accordance with Rule 32. (By displaying code flag "S" -a little blue square inside a big white one- and sounding two horns)

THE START

The Starting area will be in the vicinity of Cadboro Bay.

The scheduled time of the warning signal for the race is 9:55AM.

Boats intending to race must approach the committee boat prior to the warning signal and hail their sail number.

Races will be started using the following sequence:

Signal	Visual	Sound	Minutes before Start
Warning	Numeral 1 Flag UP	1 Sound	5
Preparatory	P Flag* UP	1 Sound	4
	P Flag DOWN	1 Sound	1
Starting	Numeral 1 Flag DOWN	1 Sound	GO!

*P Flag is blue with a white square in the center. The committee may also choose to display the I, Z, Z with I or Black flags at this time.

There will be a **single start for both divisions** (Everyone will start together) and no class flags will be displayed.

No Warning signal will be made after 11:30AM

The starting line will be between the orange flag on the committee boat and a mark nearby.

THE FINISH

The finish line will be the line formed by the red and white striped pole on the end of the clubhouse patio and the red and white striped pole on the dolphin at the end of the dock near the north end of the breakwater.

TIME LIMIT

The first boat must finish by 4:00PM or the race is abandoned. Provided the first boat finishes by 4:00PM the time limit for all remaining boats, regardless of division, is 5:30PM.

Boats failing to finish within the time limit will be scored Did Not Finish. This changes rules 35 and A4.1

PROTESTS

Protest forms are available at RVYC. Protest shall be delivered to RVYC within the protest time limit.

The protest time limit is 4:00PM Monday, October 24th, 2011.

SCORING

Times will be calculated using PHRF ratings and the time-on-distance system. (**Race Committee:** Make note of the Course selected and its distance on the results sheet! Distances are listed in the RVYC Sailing Instructions booklet.)

The Low Point scoring system of Appendix A will apply.

SAFETY REGULATIONS

Boats must comply with the safety requirements of PIYA Category III. The PIYA requirement 3.8 governing radar reflectors and 3.14 requiring 6w minimum VHF is not mandatory for this race. Skippers are responsible for compliance with Canadian Coast Guard safe boating requirements.

A boat that retires from the race shall notify the race committee as soon as possible by radio, in person, or by phoning RVYC at 592-2441.

PRIZES

The overall winner will be awarded the Virtue Cup.

Prize giving will be held concurrent with RVYC's annual awards night.



Royal Victoria Yacht Club

SAILING INSTRUCTIONS

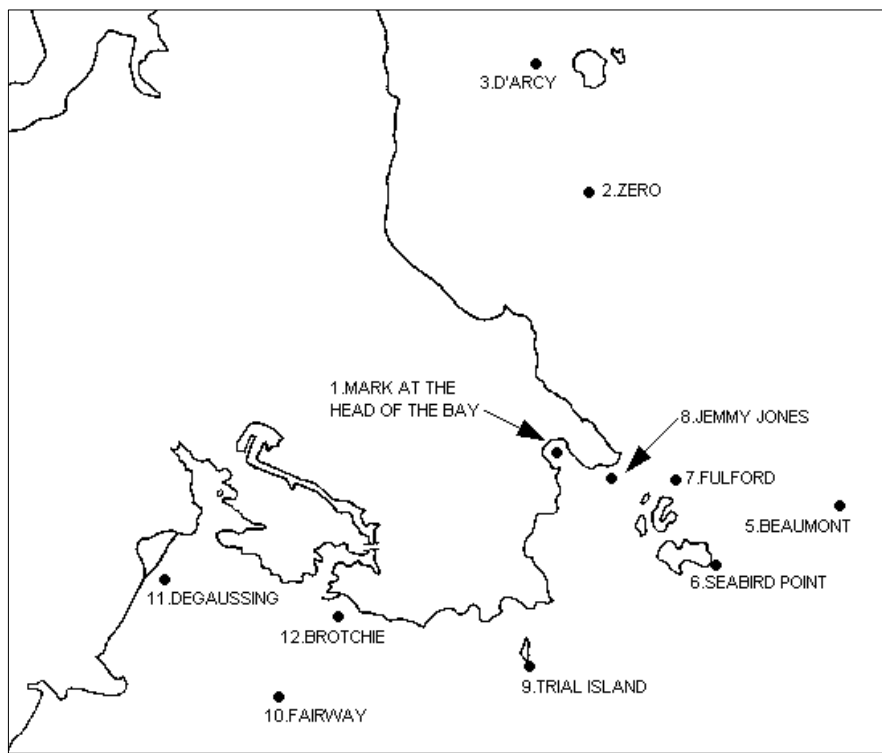
The Virtue Cup Trophy Race

INSURANCE

Each participating boat shall be insured with valid third party insurance with a minimum coverage of \$500,000CDN.

ADDENDUM A – Course Atlas

Placard	Marks (in sequence)
A.	1,2 to Starboard
B.	1,10 to Port
C.	1,2,5 to Starboard
D.	1,3 to Starboard
E.	(not used)
F.	1 to Starboard, 5,3 to Port
G.	1 to Starboard, 6,5,2 to Port
H.	1,3,5 to Starboard
I.	1 to Starboard, 6 to Port, 2,5 to Starboard
J.	1 to Starboard, 5,2 to Port
K.	1,10,12 to Starboard
L.	7,6,9 to Starboard
M.	10,11 to Starboard
N.	7,6,10 to Starboard
O.	7,6,10,12 to Starboard
P.	10,5 to Port
Q.	2,5 to Starboard
R.	8 to Port, 2,5 to Starboard
S.	6,5,2 to Port
T.	3,5 to Starboard
U.	8 to Port, 3,5 to Starboard
V.	6 to Port, 2,5 to Starboard
W.	6,5,3 to Port
X.	6 to Port, 3,5 to Starboard
Y.	5,2 to Port
Z.	9,5 to Port
AB.	9,6 to Port
AC.	5,9 to Starboard





Royal Victoria Yacht Club

SAILING INSTRUCTIONS

The Virtue Cup Trophy Race

Mark Descriptions:

1. Orange or yellow inflatable mark 1/2 to 1 mile to windward of starting line.
2. Zero Rock.
3. D'Arcy Shoals - Green can buoy 1 mile S of Sidney Island.
4. (not used)
5. Beaumont Ledge Buoy - Light buoy 2-1/2 miles NE of Discovery Island.
6. Seabird Point, including Brinn Rock - E end of Discovery Island.
7. Fulford Reef - Green can buoy 1/2 mile N. of Chatham Island.
8. Jemmy Jones Island.
9. Trial Island.
10. Fairway Buoy - Light buoy 2-1/4 miles S of Ogden Point breakwater.
11. Navy Buoy- Orange and white. position 48°25.363'N. 123° 27.182' W.
12. Brotchie Ledge - 1/2 mile SE of Ogden Point breakwater.
13. Salmon Bank - Green can buoy 1-1/2 miles S of Cattle Point on San Juan Island.
14. U.S. Navy Buoy - 48°14.3'N 123°21.8'W
15. Mark in Pedder Bay

NOTE: Yachts are not to sail between Flower Island and Ten Mile Point, or between Evans Rock and Flower Island, or between Fulford Reef buoy and Chatham Islands, or between Mouat Reef and the Golf Course, or between Brinn Rock and Discovery Island.



Royal Victoria Yacht Club

SAILING INSTRUCTIONS

The Virtue Cup Trophy Race

REGISTRATION FORM

(Not required for boats which are currently enrolled in the RVYC Racing Program)

VIRTUE Cup Trophy Race

Royal Victoria Yacht Club

October 23, 2011

Owner: _____

Address: _____

Boat Name: _____

Sail Number: _____

Class/Type: _____

Hull Colour: _____

PHRF Rating: _____

(a copy of your rating certificate is not required as membership and rating will be confirmed with the PHRF organization.)

RELEASE

I agree to be bound by the 2009-2012 Racing Rules of Sailing and by all other rules that govern this event. In consideration of acceptance of this entry or my being permitted to take part in this event, I agree to save harmless and keep indemnified The Royal Victoria Yacht Club, its organizers and their respective agents, officials, servants and representatives from and against all claims, actions, costs, expenses and demands in respect to death, injury, loss or damage to my person or property, howsoever caused, arising out of or in connection with my taking part in this event notwithstanding that the same may have been contributed to or caused or occasioned by the negligence of the same bodies, or any of them, or their agents, officials, servants or representatives. I further understand and agree that this Release is binding upon myself, my heirs, executors and assigns. I also certify that the above-named yacht carries third party insurance in an amount not less than \$500,000.00 Canadian.

IN WITNESS WHEREOF the Owner has executed this Release this _____ day of _____, 2011

OWNER OF THE VESSEL (Signature)

Please return the completed registration form to:
ROYAL VICTORIA YACHT CLUB
3475 Ripon Road
Victoria, B.C. V8R 6H1
FAX: 250-370-2286

By 9:00AM October 23, 2011

Or, if necessary, you may submit your entry form to the Race Committee on the water up to 9:45AM.